

POLO TRACE II PLAT NO. 4

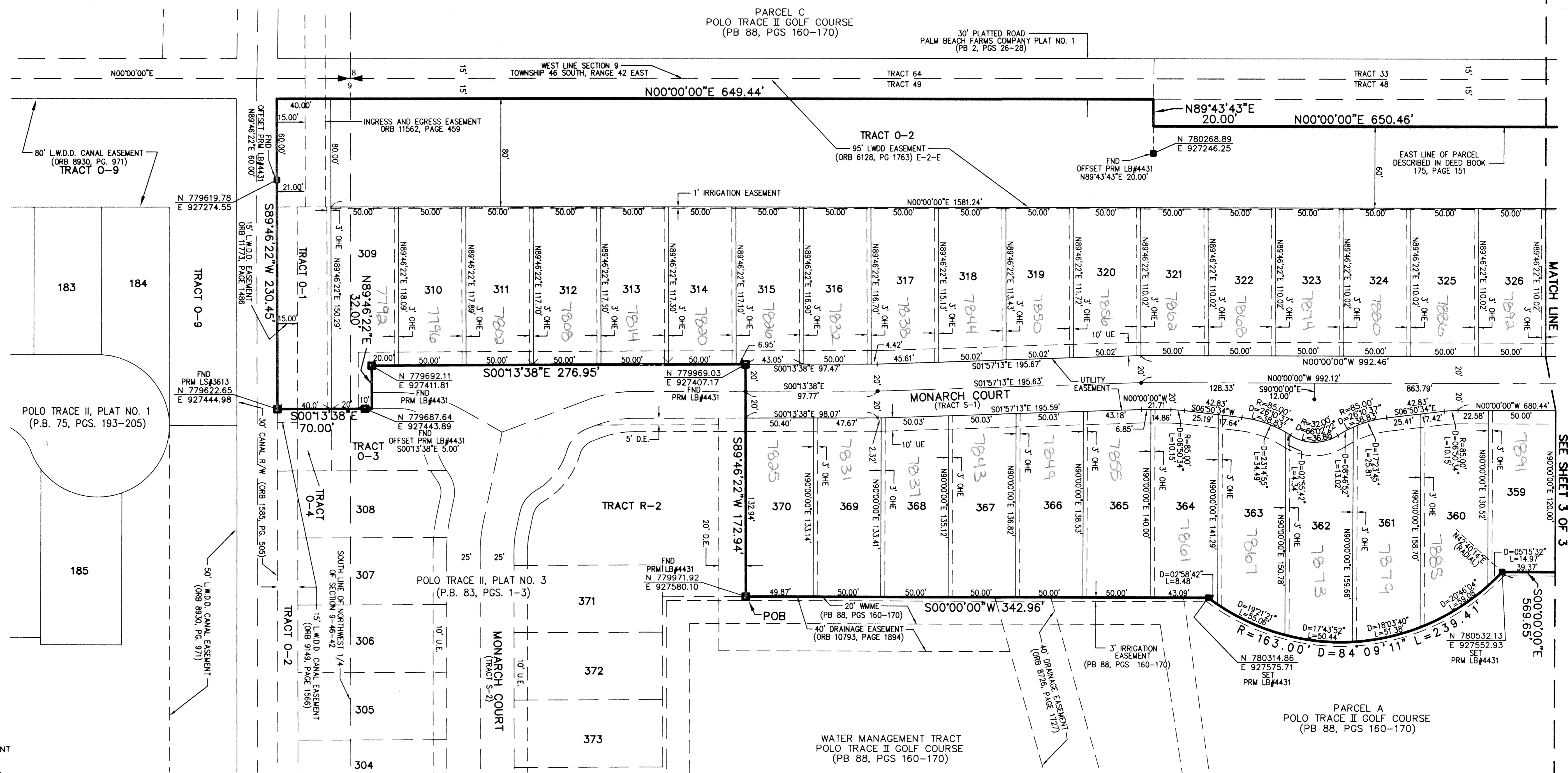
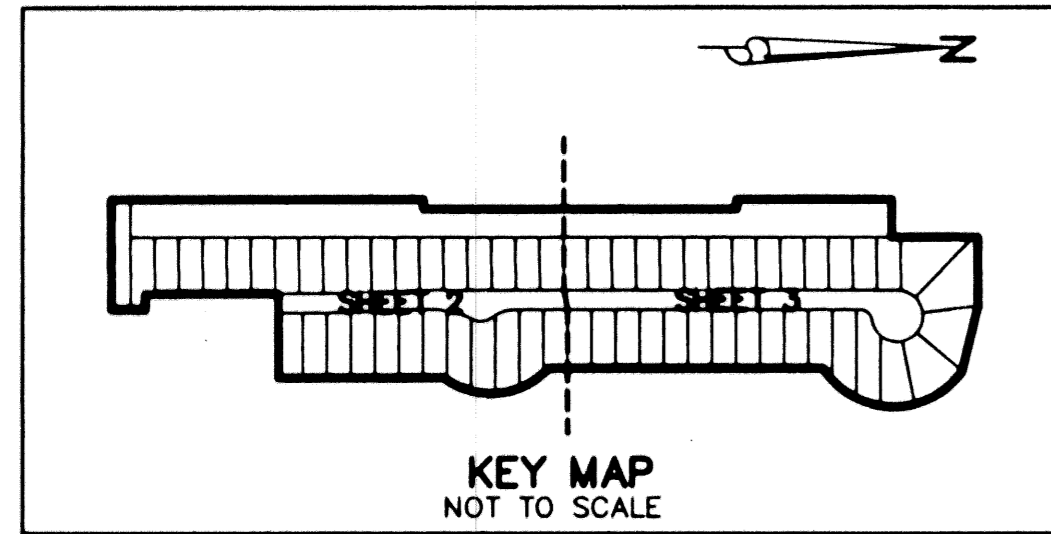
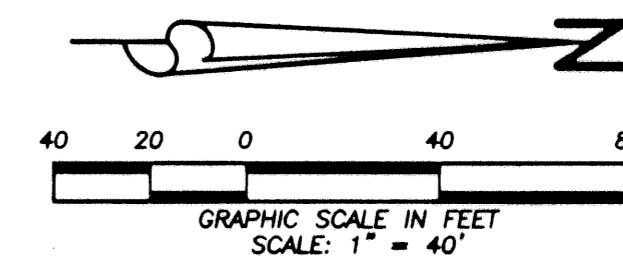
(A PART OF POLO TRACE II P.U.D.)

BEING A REPLAT OF PARCEL B, POLO TRACE II GOLF COURSE,
 ACCORDING TO THE PLAT THEREOF, AS RECORDED IN PLAT BOOK 88, PAGES 160-170,
 PUBLIC RECORDS OF PALM BEACH COUNTY, FLORIDA.
 LYING IN SECTION 9, TOWNSHIP 46 SOUTH, RANGE 42 EAST
 PALM BEACH COUNTY, FLORIDA

SEPTEMBER, 2000 SHEET 2 OF 3

0633-005

32



- LEGEND:**
- DE DRAINAGE EASEMENT
 - DB DEED BOOK
 - FND FOUND
 - LB LICENSE BUSINESS
 - MON MONUMENT
 - ORB OFFICIAL RECORD BOOK
 - OHE OVERHANG EASEMENT
 - PB PLAT BOOK
 - PCP PERMANENT CONTROL POINT
 - PG PAGE(S)
 - POB POINT OF BEGINNING
 - POC POINT OF COMMENCEMENT
 - PRM PERMANENT REFERENCE MONUMENT
 - ROW RIGHT-OF-WAY
 - RPB ROAD PLAT BOOK
 - UE UTILITY EASEMENT
 - WME WATER MANAGEMENT MAINTENANCE EASEMENT
 - SET 4"x4" CONCRETE MONUMENT
 - LB#4431
 - FOUND 4"x4" CONCRETE MONUMENT
 - LB#4431

SUBDIVISION: POLO TRACE II
 PAGE: 52
 FLAG MAP # 200A
 ZONING: RES-15
 PLAT # 15
 PLAT # 15A
 PUB NAME:

LIDBERG LAND SURVEYING, INC.

675 West Indiantown Road, Suite 200,
 Jupiter, Florida 33458 TEL: 561-746-8454

CAD	K:\AUTOCAD\KHVP\POLO\0867-306.DWG		
REF	K:\AUTOCAD\HOWN\POLO\POLOMG01.DWG		
FLD	N/A	FB.	PG.
OFF	A.J.P.		JOB 97-086(306)
OKD	D.C.L.	SHEET 2 OF 3	DATE 09/08/98
		DWG	D97-086P